



Fall/Winter 2022

CCHI News Digest

Welcome to our Fall/Winter Issue of **CCHI News Digest**, where you will find a short list of **CCHI News**, **Top Headlines** from our social media posts, and **CCHI Community Happenings**. Enjoy!

CCHI Team

CCHI News



CCHI is now **5,000 certifiants strong!** Thank you to all of our incredible supporters, raters, subject matter experts, staff and volunteers, past and present commissioners, and last but far from least, our certified healthcare interpreters!

This is only the beginning: There's so much to look forward to in 2023. Keep reading for more details! In the meantime, **the CCHI staff and Commissioners wish you a very happy and healthy holiday.** Click [here](#) to view a **special year-end message from Commission Chair Mateo Rutherford.**



SURVEY ENDING! Today (December 19th) and tomorrow (December 20th) are the last two days to fill out the Language Proficiency for Interpreters (LPI) Survey! All stakeholders are invited to participate; we especially need input from **managers, recruiters, QA specialists, and trainers** who deal with LPI challenges on a regular basis.

We estimate it will take approximately 60 minutes to complete. All your thoughtful responses will be kept confidential, and individual responses will not be identified.

Your participation in this project is invaluable. To express our deep appreciation, CCHI is offering a **1.25 non-instructional CE hours** certificate (sent immediately upon submission) to each certified interpreter who completes the survey and provides their email address.

Link to the survey: https://cchi.formstack.com/forms/cchi_lpi_survey



The new CoreCHI-Performance™ (CoreCHI-P) certification is coming in 2023!

The new credential consists of the following three elements:

- meeting the eligibility requirements (including the new standard of Language Proficiency for Interpreters, or LPI, that will be established based on the LPI survey we are conducting now),
- passing the CoreCHI™ exam (the knowledge exam), and
- passing the ETOE™ exam (the performance exam).

All current CoreCHI certificants will qualify to take the ETOE™ exam and earn the new CoreCHI-P certification credential. And of course, new applicants can earn it as well, after they pass the CoreCHI and ETOE exams.

The new ETOE™ exam is a monolingual (English-to-English) exam that assesses cognitive interpreting skills and abilities. It is based on the results of the [EtoE Interpreter Testing Study](#) and the [2022 JTA Study](#). **Registration**

for the ETOE™ exam will open at the end of January, when eligible candidates will be able to schedule (at a discounted fee!) for the **first ETOE testing window of March 14- April 12, 2023**.

Got questions? We've got answers! The updated **Candidate's Examination Handbook** will be available in January. CCHI is also hosting a free **virtual New Credential Launch Summit on February 11, 2023 (12-6 pm ET)**, where we will delve into the importance of this new credential as an industry game-changer. More details to follow soon. We look forward to seeing you there!

Top Headlines

Transcription in the Interpreting Profession: An Exciting Time to Be an Interpreter.

[Click here for more](#)

Language Barriers Limit Patient-Reported Outcomes in Cancer Care.

[Click here for more](#)

Training AI to read your lips --in multiple languages.

[Click here for more](#)

Mexico narrates the Qatar World Cup in indigenous languages. Way to go!

[Click here for more](#)

New Proposed Rule on Section 1557 May Expand Language Access in US Healthcare.

[Click here for more](#)

Breaking language barriers one word at a time.

[Click here for more](#)

Study Examines Maternal Health Care Disparities by Immigrant, Medicaid Status.

[Click here for more](#)

CCHI Community Happenings



The newest installment in our ASL-integrated **Community Conversations** series took place this November, facilitated by **Corina Gutiérrez** of the State of New Mexico Commission for Deaf and Hard of Hearing Persons (**NMCDHH**) and featuring **Jeni Rodrigues** and **Keven Poore** of the National Technical Institute for the Deaf (**NTID**). Our guests explored the differences in meaning of the term “**relay interpreting**” between spoken language and sign language interpreters, the key role that Certified Deaf Interpreters play in facilitating accurately nuanced communication, and other noteworthy matters.

Many thanks to the NMCDHH for sponsoring the ASL interpretation for this Community Conversation.

*To view previous CCHI Community Conversations from our series, please go to our [community page](#). Become an ASL Sponsor of CCHI's Community Conversations Series! Reach out to CCHI at info@cchicertification.org.



Check out our new episode of **Coffee Break with CCHI** on our **YouTube channel**! In October, Executive Director **Natalya Mytareva** talked with her mentor and founding CCHI Commissioner **Kathleen Diamond** about her career in the language industry, her role as a woman entrepreneur, and other interests.

Discover Healthcare Interpreting CoreCHI™ Scholarship



SPONSORED BY:



Atrium Health

of Fall 2022 is awarded to:

Mafikiri Fata-Marc (Swahili, French, TN)

Agnieszka Markowska (Polish, IL)

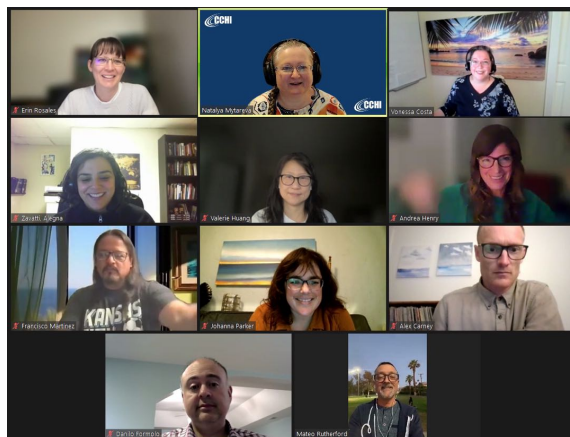
Sanjoy Dutt (Bengali, Hindi, Nepali, OR)

Siriporn Bhanont (Thai, Lao, IL)

Roody Aupont (Haitian-Creole, MA)



CCHICERTIFICATION.ORG



Fall Commissioners' Meeting: The Commissioners held their bi-annual meeting in October. They discussed the [results of the 2022 JTA study](#) and approved the new specifications for the CoreCHI and CHI exams, which will go into effect in May 2023 and October 2023 respectively. The Commissioners also adopted policies and procedures for the new CoreCHI-P certification.

CONGRATULATIONS AND WELCOME TO OUR NEW COMMISSIONERS

SETTING THE STANDARD FOR QUALITY IN HEALTHCARE INTERPRETING



**ALEGNA
ZAVATTI**



**ALEX
CARNEY**



**FABIO
TORRES**

CCHICERTIFICATION.ORG

CCHI is pleased to welcome our three newest commissioners - **Alegna**



We have begun to see some cases of fraudulent certifications being presented by uncertified interpreters. We take these complaints very seriously and thoroughly investigate each and every one. We cannot let frauds undermine the value of our certification. Report to us any fraudulent use of the CCHI credentials immediately. And to our certified interpreters, please always introduce yourself as a "nationally-certified healthcare interpreter." Let your clients know they should always verify their interpreter's credentials at <https://CertifiedMedicalInterpreters.directory>. On-the-spot verification will go a long way towards protecting our valuable certification.



Forward our *CCHI News Digest*. Share our social media platforms.
Empower colleagues and peers to be in the loop too!

[LinkedIn](#) | [YouTube](#) | [Facebook](#) | [Instagram](#)